



LTI Smart Glass, Inc.

Switchable Privacy SGULLC.0110D Standard Pivot Door Specification Data

Function:

Provides instant switchable privacy for an opaque, milky white, laminated panel to become transparent with the application of an electrical current to an embedded layer of liquid crystal particles.

Switching Action:

An array of switching options are available from a basic single-pole/single throw switch to advanced integration into home automation systems.

Energy Data:

Input Power:

120VAC / 60Hz

Energy Consumption:

~2 watts / sq meter

Performance Data:

Parallel Light Transmission:

On: ~70% / Haze = 5% - 9%
Off: ~ 5% / Haze = Full

Switching Speed:

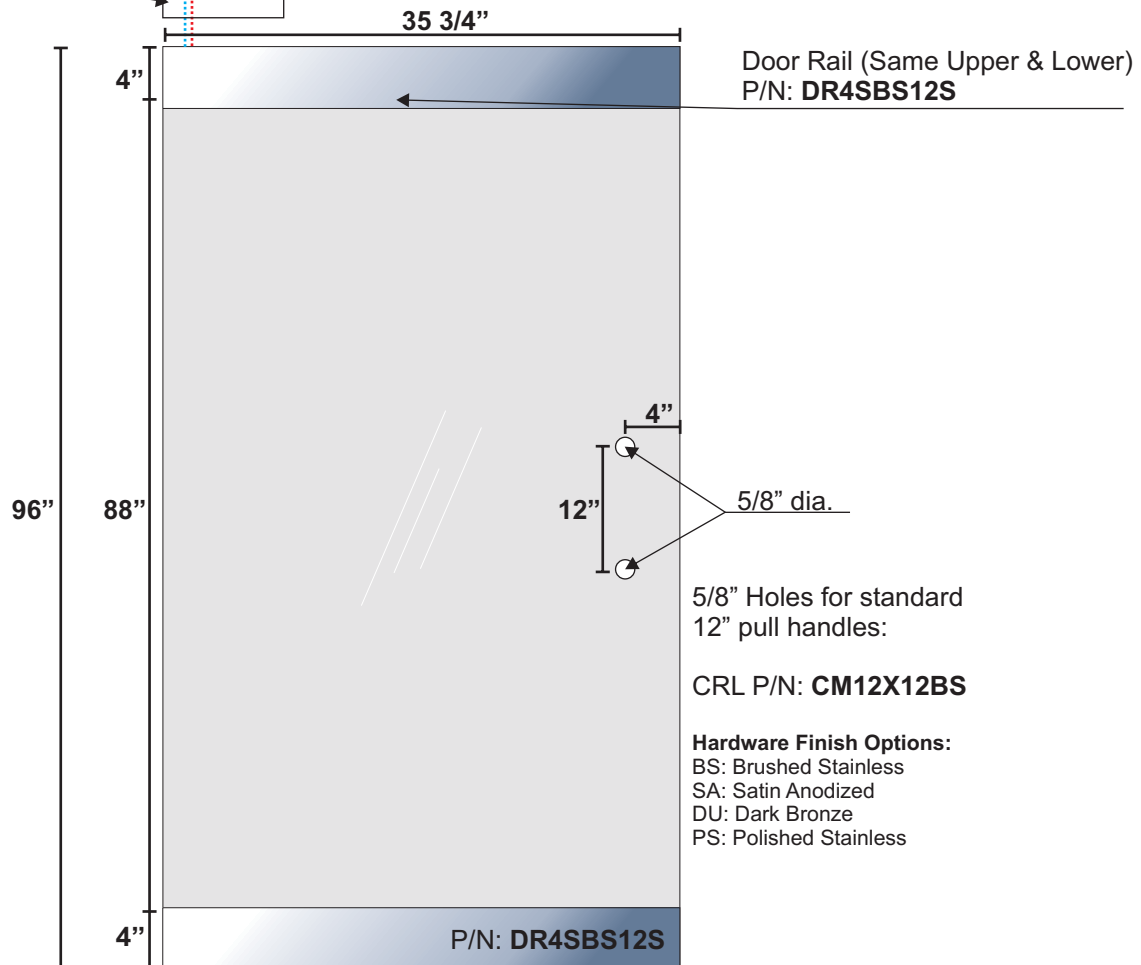
On: 7ms
Off: 17ms

Installation Data:

LTI Walking Beam Pivot
6.5"L x 1.0" W

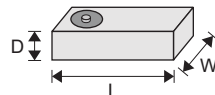
Standard Pigtail Leads
72" (2-22 GA)

NOT TO SCALE



LTI Smart Glass, Inc.
14 Federico Dr.
Pittsfield, MA 01201
Phone: 413.637.5001
Fax: 413.637.5004

www.LTISG.com



In-floor closer
CRL P/N: **8460**
13.5"L x 3.25"W x 2.5"D